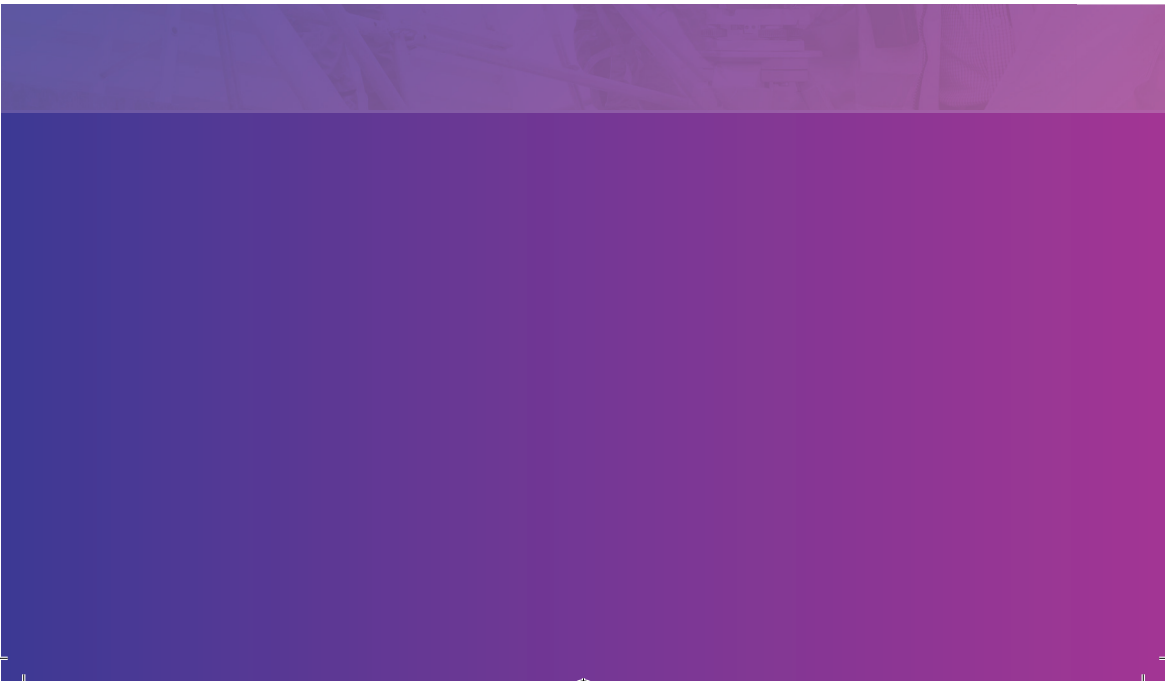




COMPOUND SECURITY
SYSTEMS



Compound Security Systems Ltd.

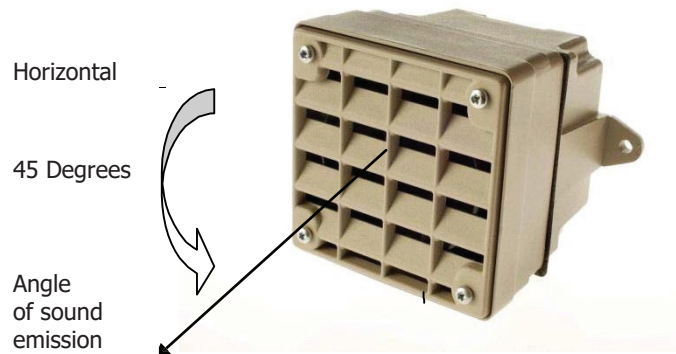


MOUNTING.

The Mosquito MK4 housing has a louvered front (see below). It is **VERY** important to note when installing the Mosquito that the louvers project the sound down at a 45 degree angle. This means that if you mount the Mosquito directly on to a wall, the sound will project down at 45 degrees.

If the area to be targeted is further away than this 45 degree angle will cover, you **MUST** use the mounting bracket (supplied) and either angle the unit upwards (to increase the range) or downwards (to reduce the range).

MOSQUITO MK4 - EXAMPLE OF SOUND PROJECTION WHEN MOUNTED FLUSH TO A VERTICAL SURFACE



SPEED OF EFFECT

The Mosquito has been known to work within 30 seconds of being activated, however, sometimes it can take a week or two of regular use for the teens to stop causing the problems and or hanging around at the location.

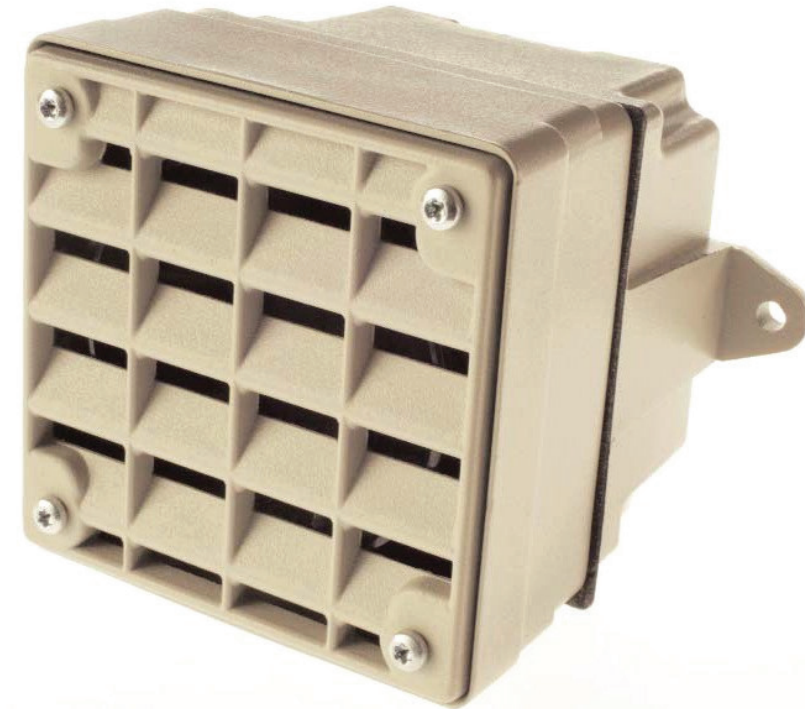
The speed at which the Mosquito will have the desired effect will depend on several factors

1. Volume setting
2. Frequency setting
3. Distance to target area
4. Ambient noise levels

The quieter the location and the closer to the target area you can install the unit, the faster you will see results.

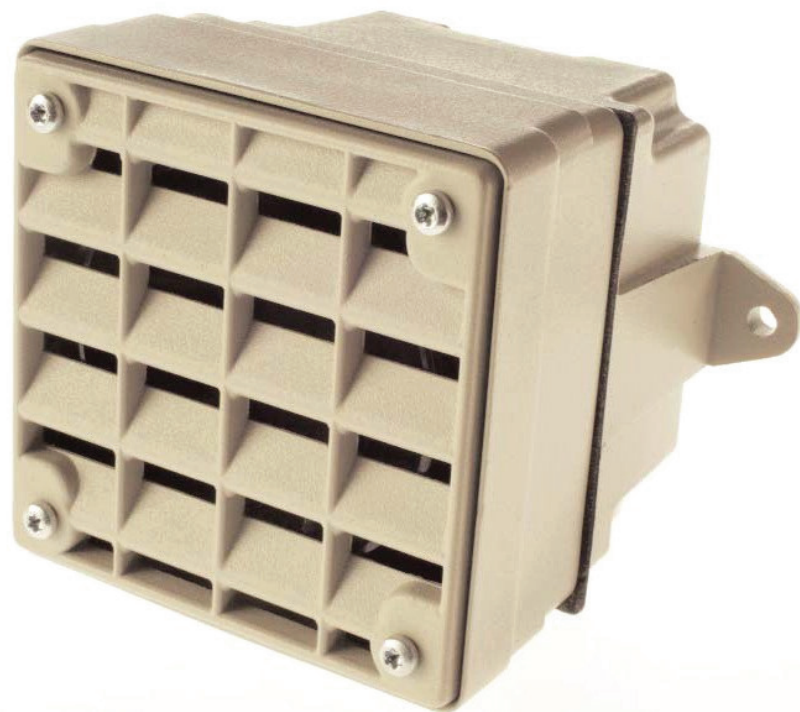
www.compoundsecurity.co.uk

Compound Security Systems Ltd.



ADDITIONAL SETUP INSTRUCTIONS

www.compoundsecurity.co.uk



ADDITIONAL SETUP INSTRUCTIONS

POWER CONNECTION

Most people purchase a 15v AC power supply with their Mosquito MK4. If you have not ordered a power supply with your Mosquito, you can either obtain one from our website or purchase one from your local electrical wholesaler. If purchasing from a wholesaler, you must specify either a 15v AC or 24v DC power supply rated at 800mA.

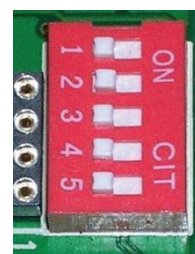
Once you are ready to connect the power supply to the Mosquito MK4, locate the power input terminals (top left of above image). There is no polarity issue to worry about, so it does not matter which wire goes in which side. Just ensure you tighten the connections fully.

FUNCTION SELECTION

First of all, you must decide which functions you wish to use. Choose these from the Function list above.

The function selection switches (DIP switches) can be located on the red block at the middle right hand side of the above picture.

The following picture shows **ALL** DIP switches set to the **OFF** position. If your DIP switches are in a different position, please set **ALL** to the **OFF** position before proceeding.



DIP switch
function selection
block

Compound Security Systems Ltd.



DIPSWITCH #1.

This is **ONLY** used when a PIR (movement sensor) or Remote Control is being used to activate the Mosquito. If you are **NOT** using a PIR or Remote to trigger the Mosquito, this switch **MUST** be in the 'OFF' position.

If you are using a PIR to trigger the Mosquito, function chip #2 **MUST** be fitted. Setting this DIP switch to the 'ON' setting will allow the Mosquito to run for 5 minutes each time the PIR detects movement. If this DIP switch is set to 'OFF' the Mosquito will run for 1 minute each time the PIR detects movement.

If you are using a Remote Control PRO., function chip #3 **MUST** be fitted, then this switch **MUST** be set to the 'ON' position (see further details below).

DIPSWITCH #2.

If this DIP switch is set to 'ON' the Mosquito will operate in 'Low Frequency' mode which is audible to people of all ages. If this switch is set to 'OFF' it will operate in 'High Frequency' mode audible to younger people only.

DIPSWITCH #3.

If this DIP switch is set to 'ON' there will be an audible beep that everyone can hear once every minute that the Mosquito is running. If the switch is set to 'OFF' there will be **NO** audible beep.

DIPSWITCH #4 & #5.

To set the volume you require, follow the configurations for switches 4 & 5 below.

- 94dB - Switch #4 'ON' & switch #5 'ON'
- 96dB - Switch #4 'ON' & switch #5 'OFF'
- 100dB - Switch #4 'OFF' & switch #5 'ON'
- 104dB - Switch #4 'OFF' & switch #5 'OFF'

www.compoundsecurity.co.uk

Compound Security Systems Ltd.



TRIGGER CONNECTION (WITH FUNCTION CHIP #3 FITTED)

If you wish to use a Pro. Remote control to trigger the activation / deactivation of the Mosquito, the remote must be connected to the 'Trigger Input' block located in the top right corner of the first image above.

Connect the switching wires from the Pro. Remote to the 'TRG -' & 'TRG +' terminals. You **MUST** then set DIP switch #1 to the 'ON' position.

Connect the power wires from the remote Pro to the '12v +' & '12v -' terminals located on the left side of the 'Trigger Block'.

TRIGGER CONNECTION (WITH FUNCTION CHIP #2 FITTED)

If you wish to use a PIR to trigger the activation / deactivation of the Mosquito, the PIR must be connected to the 'Trigger Input' block located in the top right corner of the first image above.

Connect the switching wires from the PIR to the 'TRG -' & 'TRG +' terminals.

Connect the power wires from the PIR to the '12v +' & '12v -' terminals located on the left side of the 'Trigger Block'.

The length of the time the Mosquito runs for each time movement.

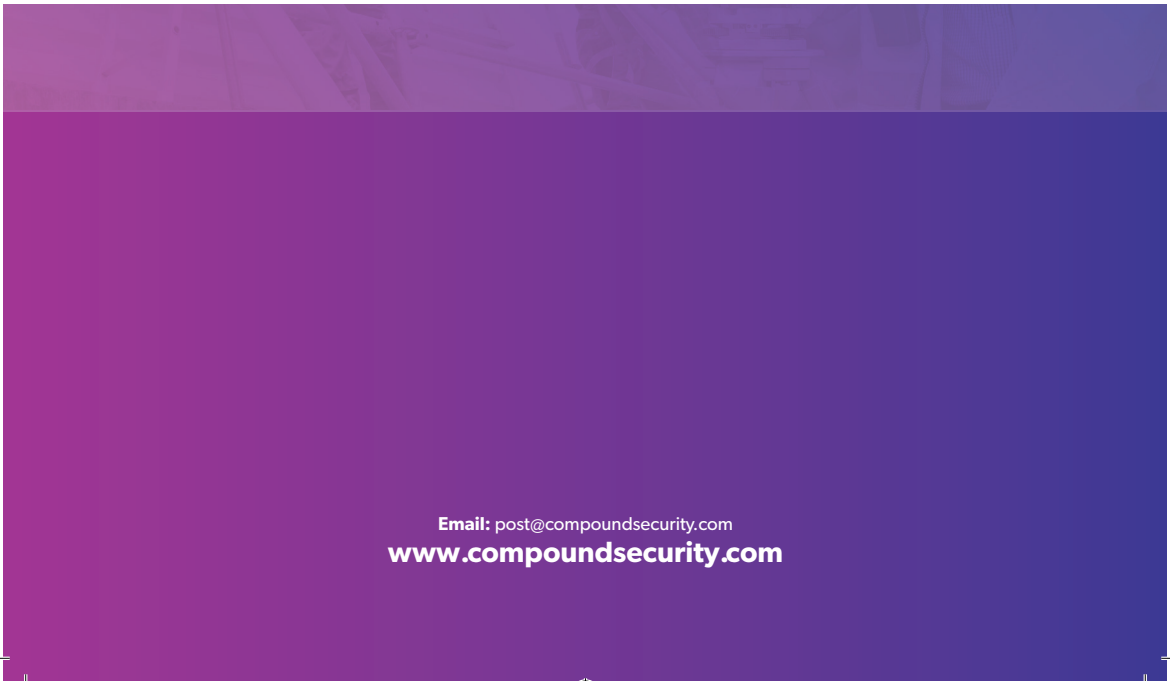
FUNCTION CHIPS

The Mosquito is supplied fitted with one of two types of function chips. These chips are located adjacent to the red DIP switch block inside the unit. The chips control the duration that the Mosquito will sound for when powered up.

RED/BLACK Chip - If your Mosquito has a RED/BLACK chip, the unit will sound for 20 minutes when powered up and then shut down automatically and wait to be re-triggered. This chip is generally installed in units that will be deployed in residential areas to ensure that the Mosquito is not left on for long periods of time for no real reason. This chip is also required if the Mosquito is to be triggered by a motion sensor.

GREEN/BLACK Chip - If your Mosquito has a GREEN/BLACK chip installed, the unit will sound continuously all the time that power is supplied to the unit. This chip is generally installed in units that are either to be used on private land or remote locations away from residences, or when the Mosquito is controlled by a timer.

www.compoundsecurity.co.uk



Email: post@compoundsecurity.com
www.compoundsecurity.com

